



# GMT MONTHLY MEMBERSHIP PROGRESS REPORT

Results as of: 3/31/2026

Multiple District 321

LOCATION: INDIA

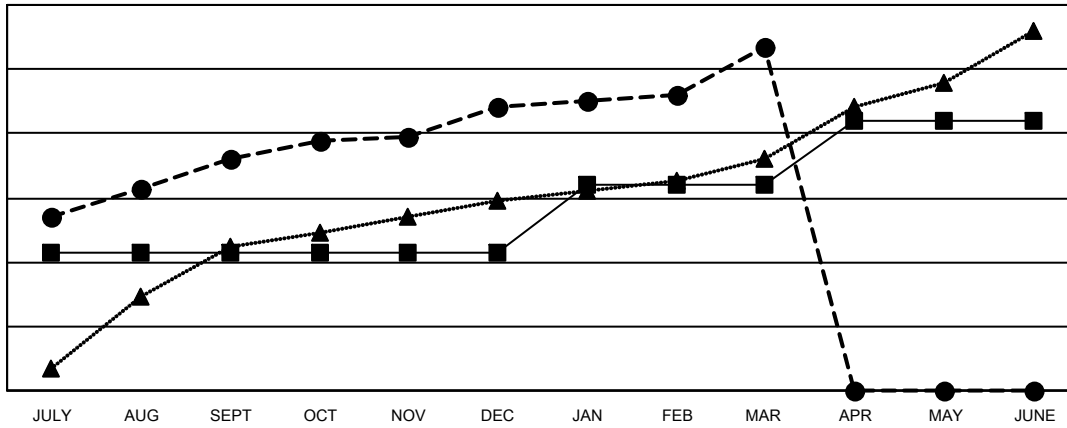
GMT: OPEN

GMT CA 6 - I

Clubs			
RESULTS FOR 2025-2026			
QUARTER	NEW CLUB GOAL	NEW CLUBS	DROPPED CLUBS
JULY/AUG/SEPT	43	72	5
OCT/NOV/DEC	0	16	53
JAN/FEB/MAR	21	19	2
APR/MAY/JUNE	20	0	0

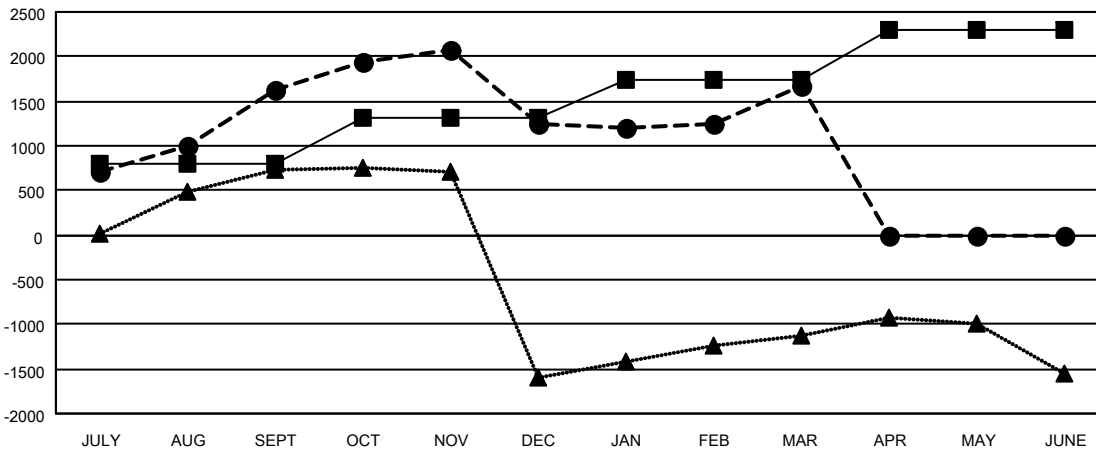
Members			
RESULTS FOR 2025-2026			
QUARTER	MEMBER GROWTH NET GOAL	MEMBER GROWTH ACTUAL	DROPPED MEMBERS ACTUAL (including transfers)
JULY/AUG/SEPT	790	3,385	1,454
OCT/NOV/DEC	515	2,469	2,635
JAN/FEB/MAR	442	1,038	383
APR/MAY/JUNE	545	0	0

GOALS AND ACTUAL NEW CLUBS CUMULATIVE



- - CURRENT YEAR GOALS FOR NEW CLUBS
- - CURRENT YEAR ACTUAL NEW CLUBS
- ▲ - LAST YEAR ACTUAL NEW CLUBS

GOALS AND ACTUAL MEMBERS CUMULATIVE



- - MEMBER GROWTH NET GOAL
- - MEMBER GROWTH ACTUAL
- ▲ - LAST YEAR MEMBERSHIP ACTUAL

DROPPED CLUBS: 60	810 CLUBS OF 1282 ADDED 1 OR MORE NEW MEMBERS	<b>GENDER DISTRIBUTION</b> MALE 23,464 (72.23%) FEMALE 9,020 (27.77%)
<b>DROPPED MEMBERS</b> DECEASED 62 CLUB CANCELLED 1,270 OTHER 3,129 TOTAL 4,461	<a href="#">CLICK HERE FOR CUMULATIVE MEMBERSHIP DATA</a>	TOTAL FAMILY UNIT MEMBERS 12,155 FAMILY MEMBERS PAYING HALF DUES 7,395